



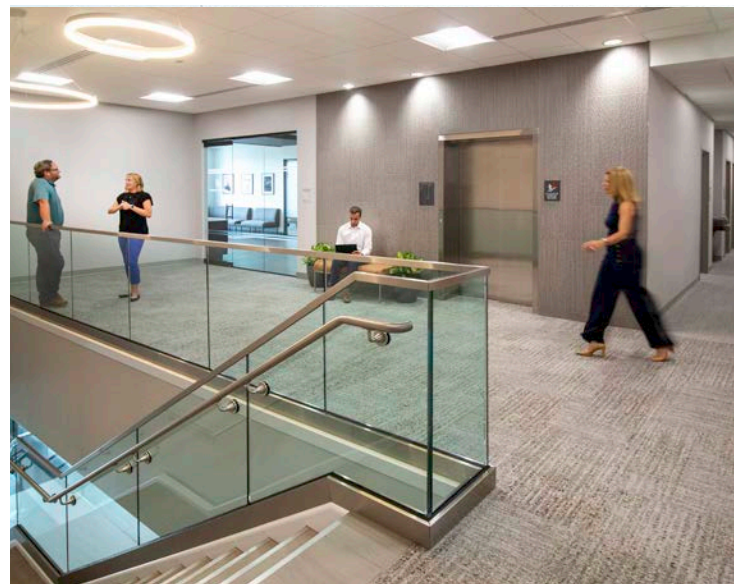
MAYFAIR  
MEDICAL COMMONS



**NOW OPEN!**

# MAYFAIR MEDICAL COMMONS

800 N. MAYFAIR ROAD | WAUWATOSA, WISCONSIN



 **IRGENS**<sup>®</sup>

866.443.0701 | [irgens.com](http://irgens.com)

**MAYFAIR MEDICAL COMMONS** is a two-story, 45,823 SF new outpatient healthcare facility that offers a highly visible location and convenient access. Located on Mayfair Road in the geographic center of the metro-Milwaukee area and southeastern Wisconsin, the site provides unmatched accessibility with adjacent access to two major north/south and east/west expressways, Interstate 94 and Interstate 41.

#### LOCATION HIGHLIGHTS

##### SURROUNDINGS

Highly visible location in the Mayfair Road corridor, surrounded by restaurants, hotels and other amenities.

##### ACCESS

- › Easily accessible from both I-94 and I-43
- › Signalized intersection at Mayfair Road and Research Drive

##### DRIVABLE AMENITIES

- › 20 minutes to Gen. Mitchell International Airport
- › 15 minutes to Downtown Milwaukee
- › 8 minutes to Mayfair Collection
- › 5 minutes to Mayfair Mall

#### BUILDING HIGHLIGHTS

- › New construction
- › Customized and efficient floor plans
- › Modern lobby and common area design
- › Signage opportunity on Mayfair Road
- › Convenient surface parking
- › Easy access and identification for patients with covered drop-off
- › Highly attractive daytime and population demographics
- › No use restrictions on ancillary services and in-suite procedures

## MAYFAIR MEDICAL COMMONS | HIGHLIGHTS





MILWAUKEE REGIONAL  
MEDICAL CENTER

WISCONSIN AVENUE PARK

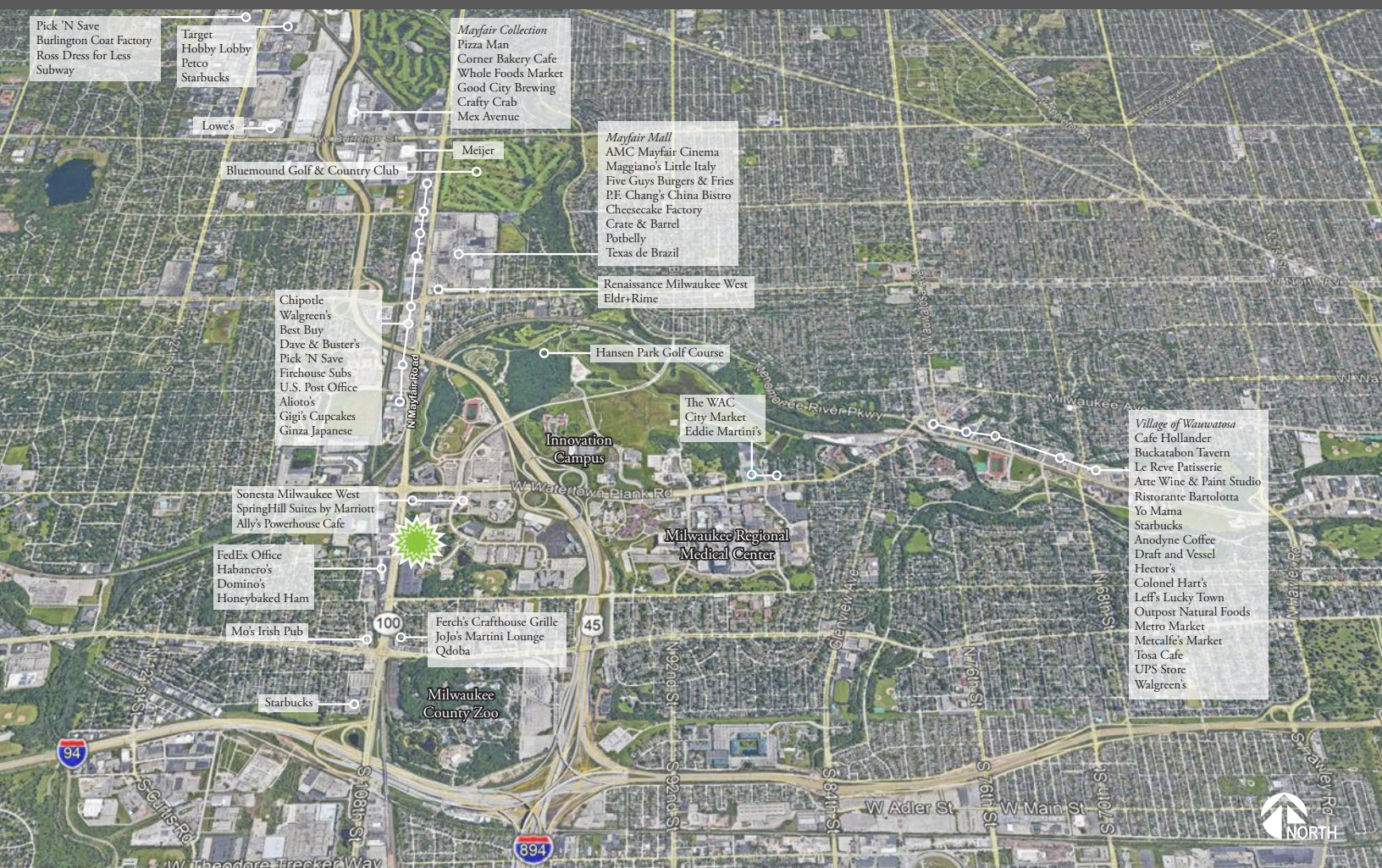
MILWAUKEE COUNTY  
RESEARCH PARK



MAYFAIR ROAD



# MAYFAIR MEDICAL COMMONS | AERIAL OVERVIEW



Pick 'N Save  
Burlington Coat Factory  
Ross Dress for Less  
Subway

Target  
Hobby Lobby  
Perco  
Starbucks

Mayfair Collection  
Pizza Man  
Corner Bakery Cafe  
Whole Foods Market  
Good City Brewing  
Craffy Crab  
Mex Avenue

Lowe's

Bluemound Golf & Country Club

Meijer

Mayfair Mall  
AMC Mayfair Cinema  
Maggiano's Little Italy  
Five Guys Burgers & Fries  
P.F. Chang's China Bistro  
Chesecake Factory  
Crate & Barrel  
Potbelly  
Texas de Brazil

Renaissance Milwaukee West  
Eldr+Rime

Hansen Park Golf Course

Chipotle  
Walgreen's  
Best Buy  
Dave & Buster's  
Pick 'N Save  
Firehouse Subs  
U.S. Post Office  
Alioto's  
Gigi's Cupcakes  
Ginza Japanese

The WAC  
City Market  
Eddie Martin's

Innovation  
Campus

Milwaukee Regional  
Medical Center

Village of Wauwatosa  
Cafe Hollander  
Buckatamb Tavern  
Le Reve Patisserie  
Arte Wine & Paint Studio  
Ristorante Bartolotta  
Yo Mama  
Starbucks  
Anodyne Coffee  
Draft and Vessel  
Hector's  
Colonel Hart's  
Leff's Lucky Town  
Outpost Natural Foods  
Metro Market  
Metcalfe's Market  
Tosa Cafe  
UPS Store  
Walgreen's

Sonesta Milwaukee West  
Spring Hill Suites by Marriott  
Ally's Powerhouse Cafe

FedEx Office  
Habanero's  
Domino's  
Honeybaked Ham

Mo's Irish Pub

Ferch's Crafthouse Grille  
JoJo's Martini Lounge  
Qdoba

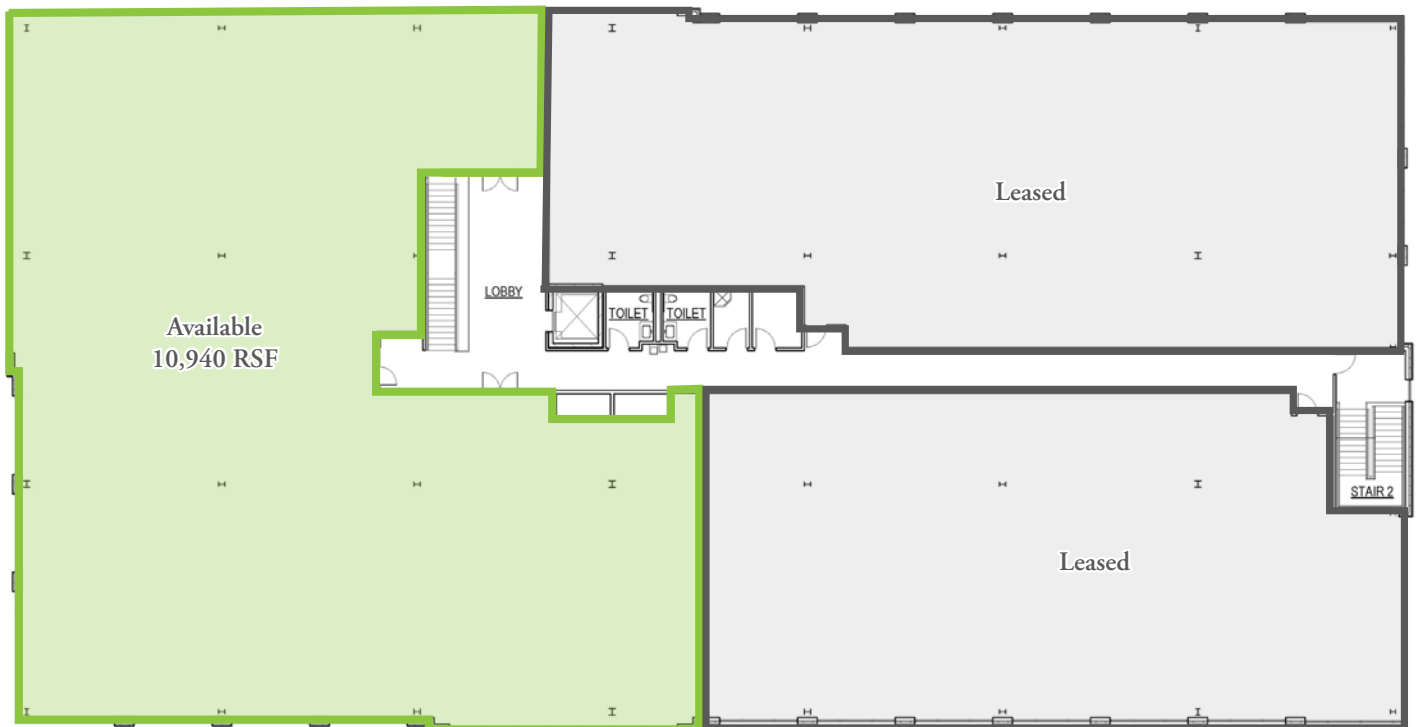
Milwaukee  
County Zoo



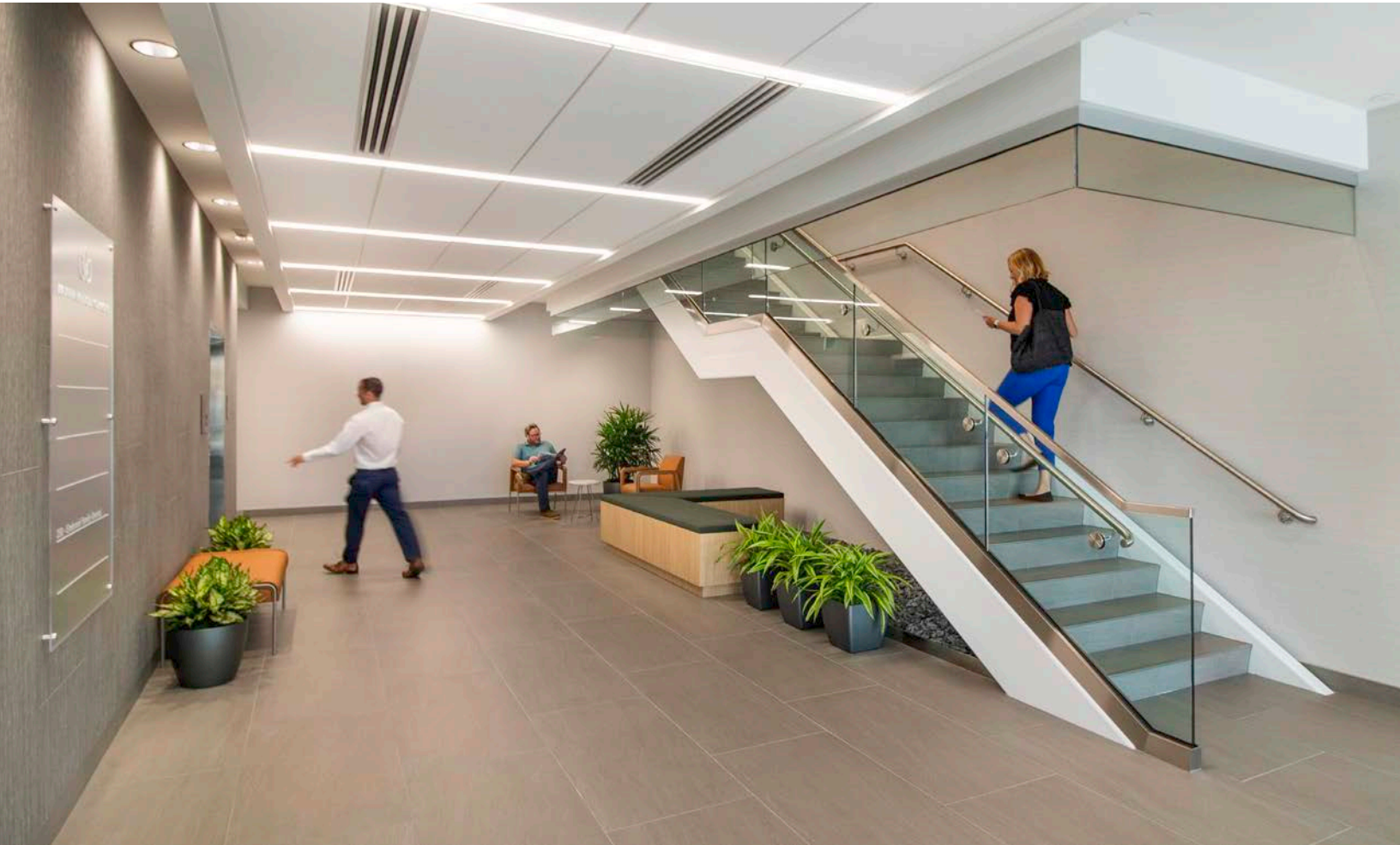
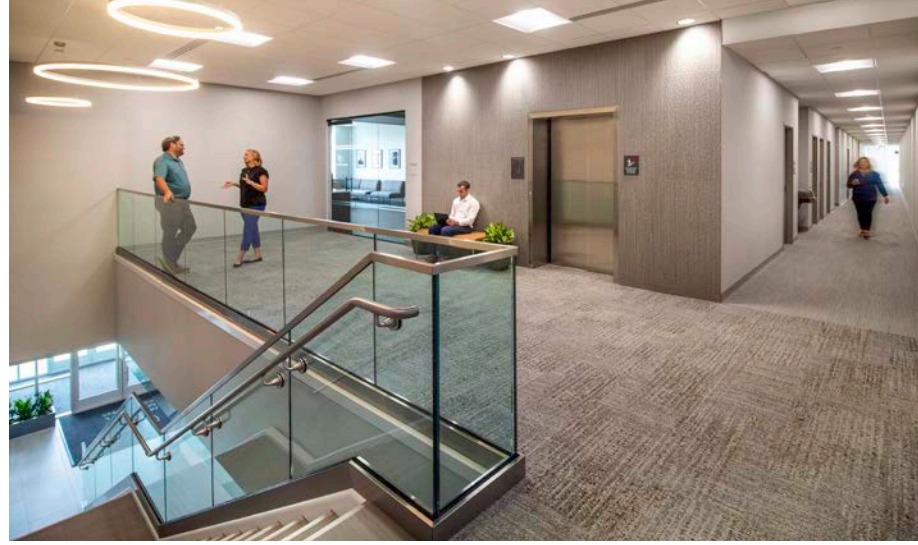
# MAYFAIR MEDICAL COMMONS | AVAILABLE SPACE



First Floor



Second Floor



## MAYFAIR MEDICAL COMMONS | CONTACT



ROB OLDENBURG  
roldenburg@irgens.com  
414.443.2526



1401 Discovery Parkway, Suite 100 | Milwaukee, WI 53226 | tele 414.443.0700 | fax 414.443.1400 | [irgens.com](http://irgens.com)

**DISCLOSURE TO NON-RESIDENTIAL CUSTOMERS**

1 Prior to negotiating on your behalf the brokerage firm, or an agent associated with the firm, must provide you the  
2 following disclosure statement:

3 **DISCLOSURE TO CUSTOMERS** You are a customer of the brokerage firm (hereinafter Firm). The Firm is either an agent  
4 of another party in the transaction or a subagent of another firm that is the agent of another party in the transaction. A  
5 broker or a salesperson acting on behalf of the Firm may provide brokerage services to you. Whenever the Firm is  
6 providing brokerage services to you, the Firm and its brokers and salespersons (hereinafter Agents) owe you, the  
7 customer, the following duties:

- 8 (a) The duty to provide brokerage services to you fairly and honestly.
- 9 (b) The duty to exercise reasonable skill and care in providing brokerage services to you.
- 10 (c) The duty to provide you with accurate information about market conditions within a reasonable time if you request  
11 it, unless disclosure of the information is prohibited by law.
- 12 (d) The duty to disclose to you in writing certain Material Adverse Facts about a property, unless disclosure of the  
13 information is prohibited by law (see lines 42-51).
- 14 (e) The duty to protect your confidentiality. Unless the law requires it, the Firm and its Agents will not disclose your  
15 confidential information or the confidential information of other parties (see lines 23-41).
- 16 (f) The duty to safeguard trust funds and other property held by the Firm or its Agents.
- 17 (g) The duty, when negotiating, to present contract proposals in an objective and unbiased manner and disclose the  
18 advantages and disadvantages of the proposals.

19 Please review this information carefully. An Agent of the Firm can answer your questions about brokerage services,  
20 but if you need legal advice, tax advice, or a professional home inspection, contact an attorney, tax advisor, or home  
21 inspector. This disclosure is required by section 452.135 of the Wisconsin statutes and is for information only. It is a  
22 plain-language summary of the duties owed to a customer under section 452.133(1) of the Wisconsin statutes.

23 **CONFIDENTIALITY NOTICE TO CUSTOMERS** The Firm and its Agents will keep confidential any information given to the  
24 Firm or its Agents in confidence, or any information obtained by the Firm and its Agents that a reasonable person  
25 would want to be kept confidential, unless the information must be disclosed by law or you authorize the Firm to  
26 disclose particular information. The Firm and its Agents shall continue to keep the information confidential after the  
27 Firm is no longer providing brokerage services to you.

- 28 The following information is required to be disclosed by law:
- 29 1. Material Adverse Facts, as defined in Wis. Stat. § 452.01(5g) (see lines 42-51).
  - 30 2. Any facts known by the Firm or its Agents that contradict any information included in a written inspection  
31 report on the property or real estate that is the subject of the transaction.

32 To ensure that the Firm and its Agents are aware of what specific information you consider confidential, you may  
33 list that information below (see lines 35-41) or provide that information to the Firm or its Agents by other means. At a  
34 later time, you may also provide the Firm or its Agents with other Information you consider to be confidential.

35 **CONFIDENTIAL INFORMATION:** \_\_\_\_\_  
36 \_\_\_\_\_  
37 \_\_\_\_\_

38 **NON-CONFIDENTIAL INFORMATION** (the following information may be disclosed by the Firm and its Agents): \_\_\_\_\_  
39 \_\_\_\_\_  
40 \_\_\_\_\_  
41 \_\_\_\_\_ (Insert information you authorize to be disclosed, such as financial qualification information.)

42 **DEFINITION OF MATERIAL ADVERSE FACTS**  
43 A "Material Adverse Fact" is defined in Wis. Stat. § 452.01(5g) as an Adverse Fact that a party indicates is of such  
44 significance, or that is generally recognized by a competent licensee as being of such significance to a reasonable  
45 party, that it affects or would affect the party's decision to enter into a contract or agreement concerning a transaction  
46 or affects or would affect the party's decision about the terms of such a contract or agreement.

47 An "Adverse Fact" is defined in Wis. Stat. § 452.01(1e) as a condition or occurrence that a competent licensee  
48 generally recognizes will significantly and adversely affect the value of the property, significantly reduce the structural  
49 integrity of improvements to real estate, or present a significant health risk to occupants of the property; or information  
50 that indicates that a party to a transaction is not able to or does not intend to meet his or her obligations under a  
51 contract or agreement made concerning the transaction.

52 **NOTICE ABOUT SEX OFFENDER REGISTRY** You may obtain information about the sex offender registry and persons  
53 registered with the registry by contacting the Wisconsin Department of Corrections on the Internet at  
54 <http://www.doc.wi.gov> or by telephone at 608-240-5830.

No representation is made as to the legal validity of any provision or the adequacy of any provision in any specific transaction.  
Copyright © 2016 by Wisconsin REALTORS® Association      Drafted by Attorney Debra Peterson Conrad